

Enerzi supplies a wide range of Continuous Wave magnetrons. The efficient and low cost S-band (2450 MHz) is the most popular choice for industrial heating and drying applications. Enerzi also manufactures Microwave head

consisting of magnetron (air or water cooled), Thermostat switch, Launcher waveguide (WR340) and a blower.



Design Studio bygm



Waveguide Components & Magnetrons



DUAL DIRECTIONAL COUPLER

MODEL NO.	STANDARD	MATERIAL
DDC-S-340	WR340	STAINLESS STEEL
DDC-A-340	WR340	ALUMINIUM
DDC-B-340	WR340	BRASS
DDC-S-430	WR430	STAINLESS STEEL
DDC-A-430	WR430	ALUMINIUM
DDC-B-430	WR430	BRASS
DDC-S-284	WR284	STAINLESS STEEL
DDC-A-284	WR284	ALUMINIUM
DDC-B-284	WR284	BRASS



ISOLATOR

MODEL NO.	STANDARD	MATERIAL
ISO-S-340	WR340	STAINLESS STEEL
ISO-A-340	WR340	ALUMINIUM
ISO-B-340	WR340	BRASS
ISO-S-430	WR430	STAINLESS STEEL
ISO-A-430	WR430	ALUMINIUM
ISO-B-430	WR430	BRASS
ISO-S-284	WR284	STAINLESS STEEL
ISO-A-284	WR284	ALUMINIUM
ISO-B-284	WR284	BRASS



THREE STUB TUNER

MODEL NO.	STANDARD	MATERIAL
C3ST-S-340	WR340	STAINLESS STEEL
C3ST-A-340	WR340	ALUMINIUM
C3ST-B-340	WR340	BRASS
C3ST-S-430	WR430	STAINLESS STEEL
C3ST-A-430	WR430	ALUMINIUM
C3ST-B-430	WR430	BRASS
C3ST-S-284	WR284	STAINLESS STEEL
C3ST-A-284	WR284	ALUMINIUM
C3ST-B-284	WR284	BRASS

MAGNETRON



MODEL NO.	DESCRIPTION	POWER RATING	COOLING SYSTEM
EMS-MAG-008-1	CW Magnetron	0.80 kW	Air Cooled
EMS-MAG-012-1	CW Magnetron	1.26 kW	Air Cooled
EMS-MAG-015-1	CW Magnetron	1.45 kW	Air Cooled
EMS-MAG-019-1	CW Magnetron	1.90 kW	Air Cooled
EMS-MAG-030-1	CW Magnetron	3.00 kW	Air/Water Cooled

Note: We also supply components for 915 MHz & 5.8 GHz

www.enerzi.co

Industrial Microwave Components



Enerzi Microwave Systems Pvt. Ltd.

"Creintors Compound", Plot No.: 99/107,
Survey No.: 343A/335, Udyambag,
BELGAUM-590 008, Karnataka, INDIA.

- Telefax : +91-831-244 1104
- Cell : +91-9035067289
- e-mail : contact@enerzi.co



Enerzi Microwave Systems Pvt. Ltd.

is the leading brand in manufacturing of Industrial Microwave Heating Systems in India. Enerzi is proud to be a pioneer in the applications of interdisciplinary engineering knowledge to develop a variety of Microwave Heating applications. Enerzi is playing a leading role to develop and deliver energy conserving, efficient, simple yet effective heating solutions with custom designed products of MICROWAVE & RF OVENS, FURNACES AND TURNKEY SOLUTIONS!

Our desire to pursue a greener, simpler and cost effective solution towards Industrial Microwave Heating System Design has brought about a radical yet viable alternative in the market.

With rich experience gained from exhaustive R&D and Design efforts, Enerzi is well poised to enter various niche market sectors for a variety of applications. This journey has resulted in the deliverance of unique heating solutions to process industries. A range of solutions based on Microwave technology has enabled our valuable customers to immensely benefit from our systems.

We manufacture high quality power supplies, HV transformers and MW heads to suit your application needs. Our power supply comes with interlocks – Cavity door open, Magnetron temperature monitoring, HV Transformer door open and a spare interlock for customized monitoring. One can also choose the type of control needed in the power supply – VARIAC (Manual and Automatic) or Thyristor based and also the output section – Halfwave doubler

or Fullwave bridge rectifier. Our HV Transformer comes in a fully enclosed, well designed box which typically consists of HV and Filament transformer, HV Diode and HV capacitor to deliver the required voltage and current to power the magnetron. Our MW head consists of Magnetron (Air or water cooled), Thermostat switch, Launcher waveguide (WR340) and a blower.

In a microwave system, the waveguide helps to efficiently transmit microwave energy from the source to the load. The waveguide size is primarily dependent on the wave frequency and mode of propagation. At Enerzi we manufacture rectangular waveguides, launchers, isolators, E & H bend waveguides,

transition pieces, three-stub tuners etc conforming to international standards which support 2450 MHz. Based on your requirement, we manufacture waveguides in Stainless-steel, Aluminium and Brass. We also develop customized waveguides.

Power Supplies

Permanent magnet type, constant power with halfwave doubler output section for 2450 MHz magnetron



MODEL NO.	INPUT RATING	MW POWER O/P
CPCD2108-SB	220 V	0.80 kW
CPCD2112-SB	220 V	1.20 kW
CPCD2114-SB	220 V	1.45 kW
CPCD2120-SB	220 V	2.00 kW
CPCD2130-SB	220 V	3.00 kW
CPCD2108-SA	110 V	0.80 kW
CPCD2112-SA	110 V	1.20 kW
CPCD2114-SA	110 V	1.45 kW
CPCD2120-SA	110 V	2.00 kW
CPCD2130-SA	110 V	3.00 kW

★ Individual spares / components are available on request

Permanent magnet type, thyristor controlled with full wave bridge rectifier output section for 2450 MHz magnetron

MODEL NO.	INPUT RATING	MW POWER O/P
CPTF2108-SA	110 V	0.80 kW
CPTF2112-SA	110 V	1.20 kW
CPTF2114-SA	110 V	1.45 kW
CPTF2120-SA	110 V	2.00 kW
CPTF2130-SA	110 V	3.00 kW
CPTF2108-SB	220 V	0.80 kW
CPTF2112-SB	220 V	1.20 kW
CPTF2114-SB	220 V	1.45 kW
CPTF2120-SB	220 V	2.00 kW
CPTF2130-SB	220 V	3.00 kW

Waveguide Components



WAVEGUIDE LAUNCHER

MODEL NO.	STANDARD	MATERIAL
CWL-S-340	WR340	STAINLESS STEEL
CWL-A-340	WR340	ALUMINIUM
CWL-B-340	WR340	BRASS
CWL-S-430	WR430	STAINLESS STEEL
CWL-A-430	WR430	ALUMINIUM
CWL-B-430	WR430	BRASS
CWL-S-284	WR284	STAINLESS STEEL
CWL-A-284	WR284	ALUMINIUM
CWL-B-284	WR284	BRASS



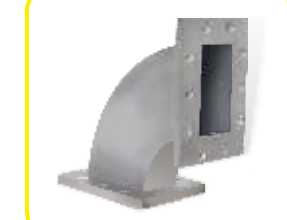
WAVEGUIDE – E BEND

MODEL NO.	STANDARD	MATERIAL
CWE-S-340	WR340	STAINLESS STEEL
CWE-A-340	WR340	ALUMINIUM
CWE-B-340	WR340	BRASS
CWE-S-430	WR430	STAINLESS STEEL
CWE-A-430	WR430	ALUMINIUM
CWE-B-430	WR430	BRASS
CWE-S-284	WR284	STAINLESS STEEL
CWE-A-284	WR284	ALUMINIUM
CWE-B-284	WR284	BRASS



STRAIGHT WAVEGUIDE

MODEL NO.	STANDARD	MATERIAL
CWG-S-340	WR340	STAINLESS STEEL
CWG-A-340	WR340	ALUMINIUM
CWG-B-340	WR340	BRASS
CWG-S-430	WR430	STAINLESS STEEL
CWG-A-430	WR430	ALUMINIUM
CWG-B-430	WR430	BRASS
CWG-S-284	WR284	STAINLESS STEEL
CWG-A-284	WR284	ALUMINIUM
CWG-B-284	WR284	BRASS



WAVEGUIDE – H BEND

MODEL NO.	STANDARD	MATERIAL
CWH-S-340	WR340	STAINLESS STEEL
CWH-A-340	WR340	ALUMINIUM
CWH-B-340	WR340	BRASS
CWH-S-430	WR430	STAINLESS STEEL
CWH-A-430	WR430	ALUMINIUM
CWH-B-430	WR430	BRASS
CWH-S-284	WR284	STAINLESS STEEL
CWH-A-284	WR284	ALUMINIUM
CWH-B-284	WR284	BRASS

